

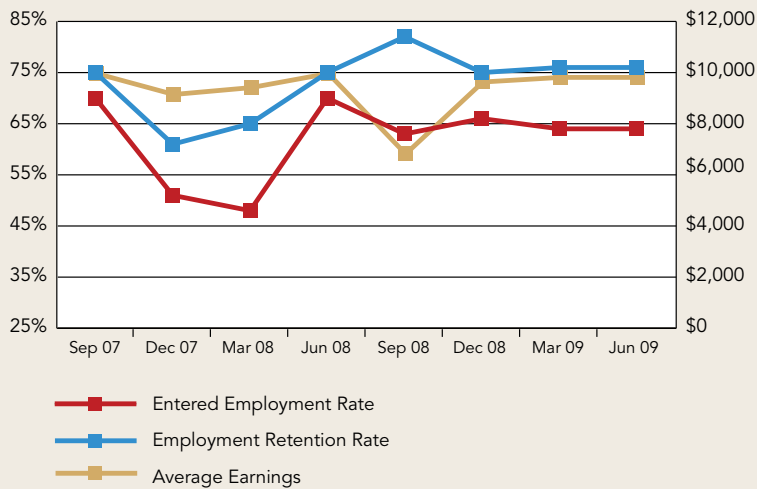
INDIAN AND NATIVE AMERICAN (INA) ADULT PROGRAM

Program website: <http://www.doleta.gov/dinap/>

PERFORMANCE GOALS

Performance Measure	Four Quarters Ending 6/30/08	Four Quarters Ending 6/30/09
Entered Employment	46%	64.0%
Retention Employment	69%	76.4%
Average Earnings	\$9,620	\$9,811

PERFORMANCE PROGRESS – PAST EIGHT QUARTERS



ANALYSIS

- The Indian and Native American Adult Program is projected to substantially meet its overall performance goals. The Entered Employment rate is just shy of the target, missing it by three tenths of a percent. This result may change when final fourth quarter data become available.
- The new UI wage record matching process delays the availability of results, therefore this analysis is based on third quarter data only. The program is expected to achieve its goals for the Retention and Average Earnings measures when final data become available.
- Throughout the economic downturn, the INA program has continued to increase service levels. Over the past four quarters, over 10,000 new participants have been served.

PROGRAM DESCRIPTION

The Employment and Training Administration’s Indian and Native American (INA) Program supports employment and training activities for Indian, Alaska Native, and native Hawaiian individuals in order to:

1. Develop more fully the academic, occupational, and literacy skills of such individuals.
2. Make such individuals more competitive in the workforce.
3. Promote the economic and social development of Indian, Alaska Native, and Native Hawaiian communities in accordance with the goals and values of such communities.

PROGRAM HIGHLIGHTS/INNOVATIONS

During the past year, the INA program continued to improve data integrity through the use of UI wage record matching. Through the use of UI wage records, the INA program has the ability to verify employment, retention and average earnings of program participants.